



Spec Formliners, Inc.

Impressive on Concrete

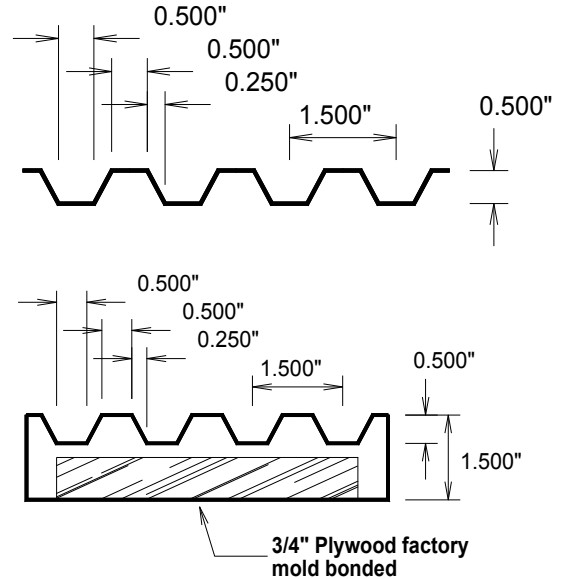
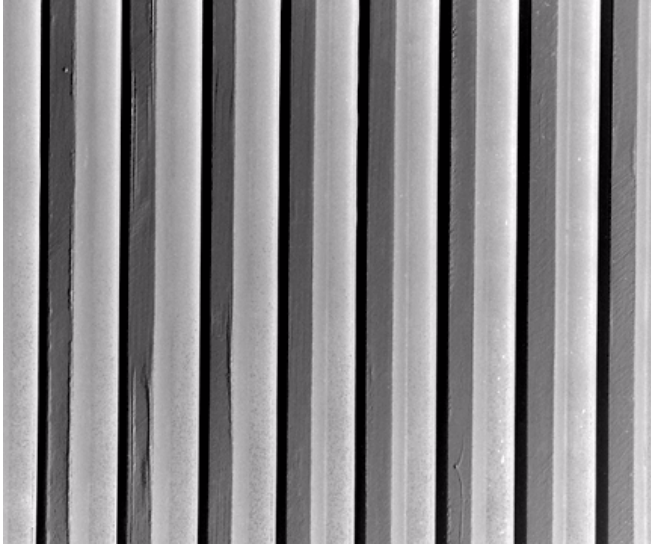


Pattern Number: **1705**

305 Standard Spec Flute

1/2" (13mm) deep flute

1-1/2" (38mm) pattern repeat



GENERAL INFORMATION

ATTACHMENT TO FORMWORK – Liners are attached to the form using TEK screws through the face of the liner spaced 12" C-C. Optional form mounting T-nuts embedded through the plywood backing is available for Elastospec panels.

FORM RELEASE – Apply with low flow, wide angle, flat spray nozzle and wipe with a cloth to insure a complete even coat to the entire form liner surface. Do not over apply form release agent. Protect treated form liners from precipitation, dust, and debris. Do not apply to reinforcing steel. For best results, use SPEC Release, aVOC compliant form release approved for all form liner materials.

TECHNICAL SUPPORT – Contact Spec Formliners, Inc. 888 429-9550

ThermoSpec™

SINGLE OR MULTI-USE PLASTIC

Property	HIPS	ABS
Tensile D638	3700	5300
IFlexural D7905	-	9300
Hardness D786	-	105
Material Weights - lbs/ft²		
0.070 MIL	0.110 MIL	0.150 MIL
0.393	0.621	0.843

ElastoSpec Lite™ Semi-Elastomeric

MULTI-USE MATERIAL

Property	ASTM	Rating
Shore A/D	D2240	40D/90A
Tensile	D412	1900 psi
Elongation	D412	300%
Tear Strength	D2370	23 MPa
Material Weights - lbs/ft²		
Varies by Pattern		

ElastoSpec™ 100% Solid Urethane

BONDED TO 3/4" PLYWOOD

Property	ASTM	Rating
Shore A	D2240	55-65
Tensile	D412	1400 psi
Elongation	D638	600%
Tear Strength	D624	200 pli
Material Weights - lbs/ft²		
Varies by Pattern		

Call for ThermoSpec™ Standard Panel Sizes on this pattern. Custom Sizes and Art Panels available
ElastoSpec™ Customized Panel Sizes and Art Panels

Spec Formliners, Inc. 1038 E 4th Street, Santa Ana, CA 92701
www.specformliners.com - Phone: 714 429-9500 - FAX: 714 429-1460